

# FocalPoint™ Graphic Workstation

## Description

Gamewell-FCI's, FocalPoint™ Graphic Workstation is a PC-based graphic user interface that connects to the 7200, 7100 or E3 Series™ product lines of fire alarm control panels. It can be connected to a proprietary or shared TCP/IP network. The FocalPoint Workstation is a high-performance industrial computer that provides text and color graphic display of fire alarm control panel network events and locations. This central command station displays systems' activities in real-time. One workstation has the capacity of simultaneously monitoring up to a maximum of ninety-nine (99), FocalPoint Gateways that can be connected to the following systems:

- 7200.
- Standalone 7100.
- Standalone E3 Series.
- 7100 NetSOLO Networks.
- E3 Series Networks.

The Workstation is used as a decision support tool by facilities management and security personnel. This workstation uses graphic images to display information that allows personnel to quickly evaluate the emergency and make prompt and informed decisions. From a single screen, a workstation operator can:

- Magnify the facility map using the zoom in and zoom out feature to view floor plans or identify the location and type of multiple events.
- Monitor remote site activity and link multimedia (text, audio, video, and bitmaps) to any device.
- View the event history log on the same screen as the facility floor plans to evaluate the sequence of events.
- Print reports of system-wide events in real-time.
- Display History Manager records for operator, event, and response (with time and date stamp to disk).

Using this graphic workstation to evaluate complex situations and make strategic decisions quickly saves property and most importantly, saves lives. During an emergency, where information must be evaluated in seconds, using a small, LCD screen to navigate a fire alarm control panel is arduous and time-consuming. The Workstation greatly simplifies the management of medium to large size fire alarm control systems. Operators can use this workstation to view the status of multiple fire alarm systems and track system events in real-time from a central location.

The FocalPoint Graphic Workstation supports a broad scope of commercial, industrial and institutional applications. The system can be configured to monitor multiple systems installed in remote locations to meet the facility requirements of multi-building complexes.

FocalPoint™, NetSOLO™, and E3 Series™ are trademarks of Gamewell-FCI.

## PC-Based Graphic User Interface



FocalPoint Graphic Workstation

## Features

- Flexible Remote Control - Using the workstation with the 7200 or E3 Series™ systems, the following fire alarm functions can be activated via remote control:
  - Acknowledge
  - Reset
  - Silence
 Note: The 7200 can also be remotely controlled to enable or disable fire alarms.
- User-Friendly System Setup - Import facility floor plans as Windows® graphic bitmaps or Windows® graphic meta files.
- Secure Access - Security profiles provide multiple levels of access to different user types.
- Improved System Maintenance - Reports and logs trouble events.
- Automatic Screen Navigation - (selectable for each device) that locates and zooms to the device related to an alarm or event, based on the priority of the event.
- Backup capability - System backups for screen, user, and history databases. All software is backed up on CD-RW.
- Information Labels - Identify Hazardous Material (HAZMAT) and handicapped accessible areas using fully linked multimedia.

An ISO 9001-2000 Company



### GAMEWELL-FCI

12 Clintonville Road, Northford, CT 06472 - Tel: 203-484-7161 - Fax: 203-484-7118

Specifications are for information only, are not intended for installation purposes, and are subject to change without notice. No responsibility is assumed by Gamewell-FCI for their use.

**FocalPoint Workstation:**

- Rack-mountable 2.0 GHz Pentium® IV processor with 512 Mbytes of RAM.
- 17" (43 cm) flat-screen LCD monitor, capable of 1024 x 768 display resolution with sound card and speakers.
- Operates under Microsoft® Windows® XP Professional.
- UL Listed.

**Graphics:**

- Graphic editing mode allows on-site programming of floor plan screens, device icons, functional and navigational buttons.
- Imports the following types of converted vector drawing files from CAD floor plan drawings:
  - .WMF            - .JPEG
  - .BMP            - .GIF
- Graphics printing of floor plans and reports.
- Custom-designed, device icon colors that represent each event type.

**System Requirements:**

- Intel® Pentium® IV, 2.0 GHz processor.
- Graphics card capable of supporting 1024 x 768 screen resolution.
- Auxilliary ports:
  - One (1), RS-232 port and serial cable for event printer operation.
  - One (1), parallel printer port for graphics printing.
  - One (1), USB port for software key.
- 512 MB RAM.
- 20 GB hard drive.
- CD-RW drive.
- Audio with speakers.
- Microsoft Windows® XP Service Pack 2.
- Microsoft serial PS/2—compatible mouse.
- 101-key keyboard.

**Network:**

- Ethernet network.

**Control Capabilities**

Panel	Acknowledge	Silence	Reset	Enable/Disable	Comments
7200	Yes	Yes	Yes	Yes	Direct Connect
7100 Stand Alone	No	No	No	No	Monitor only
7100 on E3 Network	Yes	Yes	Yes	No	Through E3 7100 Network must have ILI-MB-E3.
E3 Series Stand Alone	Yes	Yes	Yes	No	
E3 Network	Yes	Yes	Yes	No	



FocalPoint Gateway

**FocalPoint Gateway**

The FocalPoint Gateway is a powerful interface that provides the capacity to monitor multiple networks, up to ninety-nine (99) FocalPoint Gateways, installed in remote locations. The gateway interfaces with the 7200, 7100 or E3 Series product lines via the panel's RS-232 port. In addition, the gateway can be used to connect to the FocalPoint Graphic Workstation via standard Ethernet TCP/IP networking.

Figure 1 illustrates the adaptable, flexibility of the FocalPoint Gateway to connect to any of the following types of network installation options:

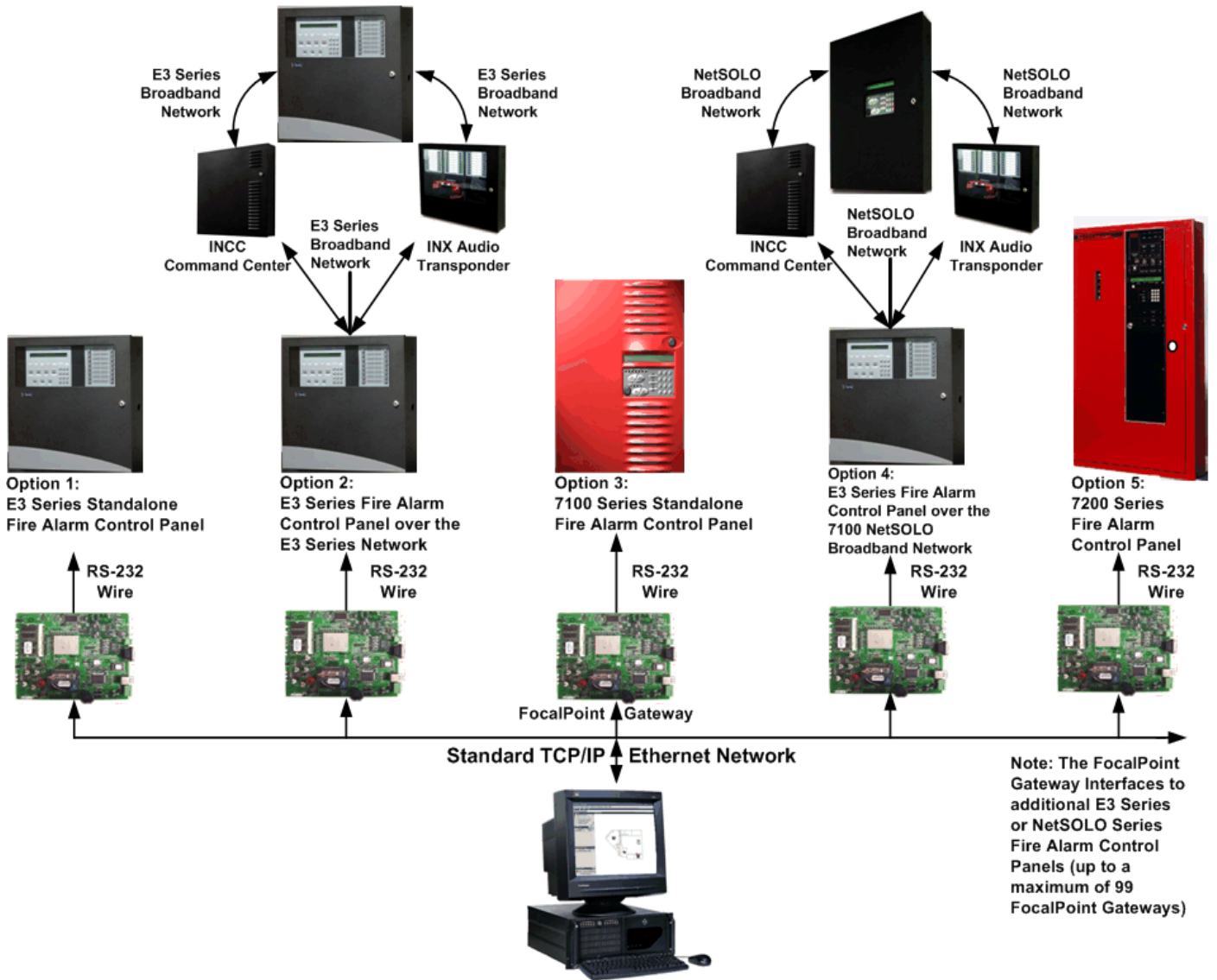
- Option 1: E3 Series standalone.
- Option 2: E3 Series connected to an INCC command center or INX audio transponder over an E3 Series Broadband network.
- Option 3: 7100 standalone.
- Option 4: 7100 NetSOLO connected to an INCC command center or INX audio transponder over a NetSOLO Broadband network.
- Option 5: 7200 standalone.

**GAMEWELL-FCI**

12 Clintonville Road, Northford, CT 06472 - Tel: 203-484-7161 - Fax: 203-484-7118

[www.gamewell-fci.com](http://www.gamewell-fci.com)

9020-0647 Rev. A page 2 of 4



FocalPoint Graphic Workstation  
**Figure 1 FocalPoint Gateway Installation Options**

## FocalPoint Graphic Workstation Screens

The FocalPoint Graphic Workstation provides the following types of graphic displays. Figures 2 and 3 illustrate the screens.

- FocalPoint Graphic screen.
- FocalPoint text mode screen. Displays system layout from CAD floor plan drawings.

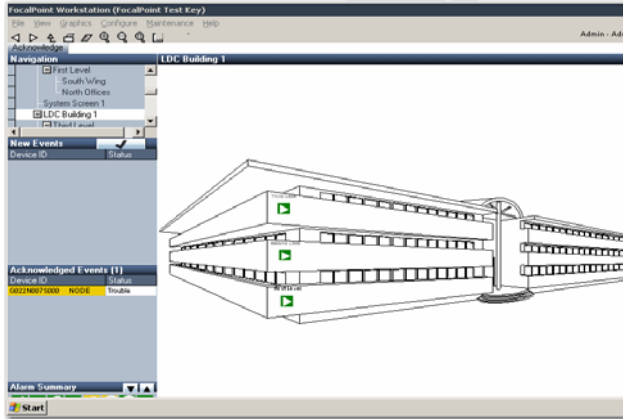


Figure 2 FocalPoint Graphic

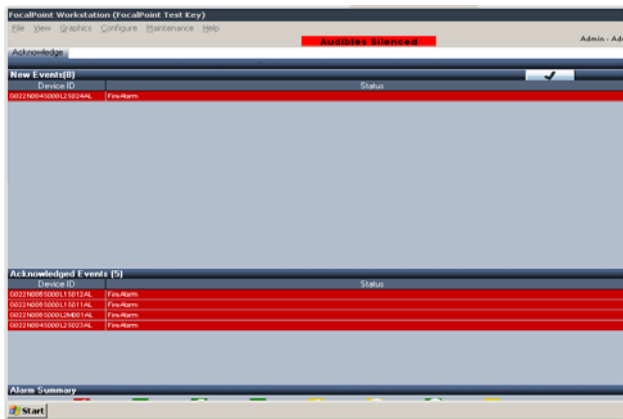


Figure 3 FocalPoint Text Mode

## Specifications

CPU Dimensions: 19" W x 7" H x 17.7" D  
(48.3 x 17.8 x 45 cm)  
weight: 39 lbs. (17.7 kg)

CPU Electrical: AC Input:  
(frequency 50/60 Hz),  
7.0 A @ 115 V (95-132 V),  
4.0 @ 230 V (185-264 V).

Monitor Dimensions: 17" (43 cm) flat-screen LCD color  
monitor  
16.5" W x 17.2" H x 7.8" D  
(42 x 44 x 20 cm)  
weight: 15.6 lbs. (7 kg)

Monitor Electrical: AC Input:  
(frequency 50/60 Hz auto-adjust)  
1.8 A @ 100 - 240 VAC. Power  
consumption: 43 watts (maximum).

## Ordering Information

Part Number	Description
FPT-WKS	FocalPoint graphical user interface software for network annunciation. Workstation UL Listed PC included. (UL Version).
FPT	FocalPoint graphical user interface software for network annunciation. Workstation PC not included. (non-UL Version).
FPT-GATE	FocalPoint Gateway includes gateway, surge suppressor (PNET-1), cables and cabinet.

### GAMEWELL-FCI

12 Clintonville Road, Northford, CT 06472 - Tel: 203-484-7161 - Fax: 203-484-7118

[www.gamewell-fci.com](http://www.gamewell-fci.com)

9020-0647 Rev. A page 4 of 4