



NETWORK MONITORING!

System Management from your Personal Computer —



Easily manage your DMP alarm panels from your personal computer.

Use System Link™ to:

- set up new alarm system users and operators
- change and maintain user codes
- configure new panel accounts
- set up arming/disarming, door, and holiday schedules
- silence alarms
- arm or disarm a system
- bypass zones
- monitor system status

The software solution to managing your end-user alarm panels from your personal computer.

SYSTEM LINK™ END-USER MANAGEMENT SOFTWARE

SYSTEM FEATURES

- Remote panel management for all DMP Command Processor™ panels
- Customize connection options for each panel account: network, dial-up, or direct
- Comprehensive User's Guide and context-sensitive help means immediate answers right where you are in the program
- Provides peace-of-mind by restricting operators from performing certain functions
- Stores database of panel programming files and event buffers
- Display or print comprehensive system reports
- Easily retrieve events for review
- Sort and print user codes by name, code, and number

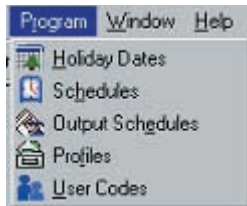
VERSATILE ADD-ONS

- **Advanced Reporting Module** – Provides advanced customer reports.
- **Alarm Monitoring Module** – Allows Central Station operators to easily view and acknowledge alarms and account information.
- **Command Center Module** – Displays a grid of accounts on one computer screen to view and acknowledge alarms and accounts.
- **Account Groups Module** – Allows Central Station operators to assign, update, change, or delete user codes on multiple XR500 Series panels at the same time.
- **Link Server Application**– Allows multiple operators using networked computers to access the same database at the same time.
- **Admin Reader** – Enrolls credentials directly into System Link to save time.



MAINTAIN SUBSCRIBER ACCOUNTS

Using a set of program screens, System Link™ allows you to easily set up and maintain subscriber account files and connect with panels to download and upload information. System Link also allows you to print copies of account and operator activity.



Account Programming Options

CHOICE OF CONNECTIONS

Connect to your alarm panel accounts through a data network, the Internet, a telephone line, or directly from your computer.

PROGRAMMING AND CONTROL OPTIONS

You have the freedom to remotely program and control all DMP Command Processor™ panels using System Link. Additionally, you can program the XR500 Series, XR2500F, XR200, and XR200-485 panels directly from a laptop computer.

SYSTEM LINK TOOL BAR

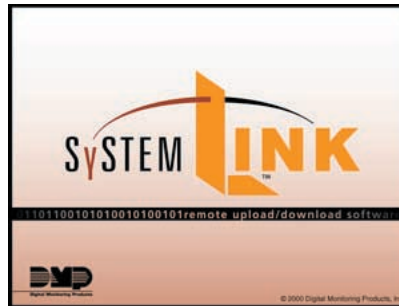
System Link provides a customized toolbar to assist you when performing common tasks. The toolbar displays just below the menu bar. Simply place a button on the toolbar to quickly open the needed window without using the menu bar and drop-down menus.



Customized Tool Bar

CUSTOMIZE SYSTEM LINK

Link Customizer allows you to customize System Link for your customers. Before you customize System Link, the title bar displays *System Link*. After you customize the customer copy of System Link your company information, logos, and images replace *System Link*.



System Link Startup Screen



Sample Customized Startup Screen

ACCESS AND LOG-ON

Customized levels of authority that allow operator access to specific program functions may be individually assigned to each operator. Because operators must be logged into the program, tracking operator actions is easily achieved.

SYSTEM LINK HELP

Get detailed help immediately! When you have a question in System Link, simply press the F1 key to view the help text that relates directly to the screen or field where you are working. The User's Guide also provides additional help and information.

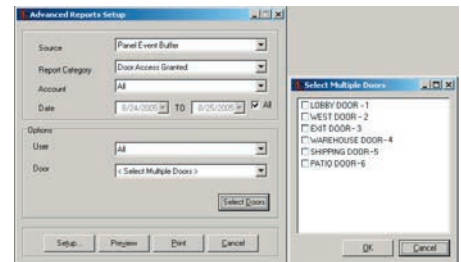


ADVANCED REPORTING MODULE

The Advanced Reporting Module allows you to create custom reports using real-time events from PC Log Reports or from a previously retrieved Panel Event Buffer.

Events may be filtered using different **Report Categories** allowing you to create reports that suit your specific needs. Some of the Report Categories available are listed below:

- Arming
- Disarming
- Area Late to Close
- Door Access Granted
- Door Access Denied
- System Monitors
- System Events



Advanced Reporting Display

EXPORT CAPABILITIES

Save the reports in one of seven available file types. This allows you to open the reports in another program, such as Microsoft Excel, and integrate the reports in other company reports or save for archival purposes. Supported file types include:

- Text File (*.TXT)
- Comma Separated (*.CSV)
- HTML document (*.HTM)
- Excel spreadsheet (*.XLS)
- Rich Text Format (*.RTF)
- Windows Metafile (*.WMF)



ALARM MONITORING AND COMMAND CENTER MODULES

The Alarm Monitoring and Command Center Modules share many of the same operation functions. These functions are detailed in the following paragraphs and sections.

Add Alarm Monitoring or Command Center to workstations where you want to monitor and print events for subscriber accounts. The modules allow you to monitor door access events at the site, providing a higher level of security by monitoring who comes and goes and when. You can send your subscribers reports of their openings and closings to keep for their records.

HYPERLINKED SUBSCRIBER INFORMATION

Hyperlink to files containing additional information about the site allowing operators to give proper information to the authorities such as the site password and address.

EASY-TO-USE INTERFACE

When an alarm signal is received, the Alarm Monitoring Alarm List or the Command Center Alarm Grid displays automatically on top of any open windows, and an alert tone sounds to identify the alarm. Operators may view the Alarm List or Alarm Grid at any time.

ALARM LIST DISPLAY

Depending on the monitor settings, each new signal displays on a violet background in the Alarm List. Once acknowledged, the background color changes to represent the type of signal. For example, acknowledged fire alarms display on a red background.

By color-coding alarms, operators can determine the priority of the alarm signal at a glance. This ensures that operators acknowledge and respond to the most important signals before responding to non-emergency signals, such as a low AC signal.

Visible Alarms
 All - F3 Disabled - F4 Non-Restored - Alt-F3

| Account | Message | Rpt | Time | Ackn. |
|---------|--|-----|-------------------------|-------------------------|
| 1-3232 | TROUBLE: SCS1 Test Signal Not Received Not restored | 1 | 12/22/00 2:08:54 PM | 12/22/00 2:10:28 PM |
| 1-9806 | Fire Zone: 10 Z 10 ALARM | 0 | 12/14/00 2:53:59 PM | 12/14/00 3:09:54 PM |
| 1-5070 | Panic Zone: 19 KEYPAD 1 ALARM by User: 0 Not restored | 4 | 12/19/00 9:14:25 AM | 12/19/00 9:14:43 AM |
| 1-9008 | Standby Battery Restored Not restored | 0 | 12/20/00 9:24:09 AM | 12/20/00 9:45:47 AM |
| 1-900 | WARNING: Panel Tamper Not restored | 3 | 12/19/00 1:53:10 PM | 12/19/00 2:03:42 PM |
| 1-9806 | Supervisory Zone: 7 SUP ALARM | 2 | 12/12/00 12:11:26 PM | 12/14/00 2:41:12 PM |
| 1-110 | Burglary Zone: 1 ROOF HATCH (Area: 1) TROUBLE Not restored | 0 | 12/20/00 12:29:19 PM | 12/20/00 12:29:38 PM |
| 1-9806 | Burglary Zone: 6 Z6 DAY (Area: 1 MAIN) TROUBLE | 4 | 12/12/00 12:07:58 PM | 12/14/00 1:40:32 PM |

Alarm Monitoring Display

COMMAND CENTER GRID

Installing the Command Center Module adds the Alarm Grid window display to System Link. The Alarm Grid organizes subscriber accounts by account number in the format of a grid. Each account has its own Alarm List. When you click on the Alarm Grid segment for an account, the Alarm List opens to display the account alarm and information.

Alarm Grid

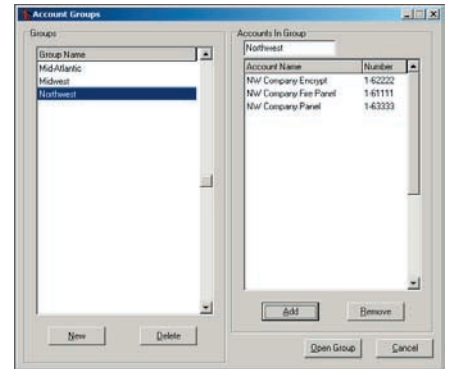
| System | 1-1 | 1-2 | 1-5 | 1-10 | 1-11 | 1-21 | 1-45 |
|--------|-------|-------|-------|-------|-------|-------|-------|
| 1-80 | 1-80 | 1-90 | 1-100 | 1-109 | 1-110 | 1-111 | 1-112 |
| 1-113 | 1-120 | 1-121 | 1-125 | 1-126 | 1-128 | 1-136 | 1-137 |
| 1-141 | 1-150 | 1-160 | 1-169 | 1-167 | 1-170 | 1-183 | 1-212 |
| 1-281 | 1-251 | 1-252 | 1-275 | 1-301 | 1-302 | 1-316 | 1-332 |

Command Center Display



ACCOUNT GROUPS MODULE

The Account Groups module saves time when assigning, updating, changing, or deleting users and user codes on grouped XR500, XR500N, XR500E, and XR2500F panels. For convenience, associate the groups by location, business, or other logical grouping.



Account Groups Display

LINK SERVER APPLICATION



System Link is designed and licensed specifically for use on a single workstation. Link Server software accommodates larger installation and service environments where multiple computers are used to upload/download panel information. When installed on a network server, Link Server allows multiple client computers to simultaneously access System Link.

ADMIN READER

Use the unique desktop unit with System Link to greatly reduce the time spent entering proximity credentials manually. Simply press the Scan Card button and present the proximity device to the Admin Reader. The device automatically assigns a code to the selected user in an efficient and effective manner.



Admin Reader

ACCESSORIES

- 462N-DC Network Interface Card
- 394 Direct Programming Cable
- iCOM Network Alarm Router
- iCOM-E Encrypted Network Alarm Router
- iCOMSL Network Alarm Communicator

SIMPLE INSTALLATION

Communication to the PC is provided via a standard DB9 connector to a dedicated serial port. Power is provided by a six-foot "Y" cable connected in-line with either the keyboard or mouse PS2 connector.

PROXIMITY DEVICE FORMATS

The Admin Reader is specifically designed for all DMP HID formats, making any proximity device that is compatible with DMP panels compatible with the Admin Reader.

SYSTEM REQUIREMENTS

- Pentium Processor
- 800 x 600 or higher monitor resolution
- CD-ROM drive
- One COM port if connecting to SCS-1R, SCS-105, or direct cable connection
- One NIC Card if using Ethernet connection for alarm communications

OPERATING SYSTEM COMPATIBILITY

- Windows 95/98
 - Windows NT4
 - Windows 2000 *
 - Windows ME
 - Windows XP *
- * Requires Administrative authority to install software.

PANEL COMPATIBILITY

The following software is compatible with all DMP Command Processor™ Panels:

- System Link
- Command Center
- Admin Reader
- Alarm Monitoring
- Advanced Reporting
- Link Server

The Account Groups Module is only compatible with XR500 Series and XR2500F panels.

SOFTWARE LICENSE LEVELS

Order the level to fit the number of accounts monitored. Call DMP Customer Service to upgrade to the next level.

- 1 - 10 accounts
- 11 - 100 accounts
- 101 - 500 accounts
- 501 - 1000 accounts
- 1001 - 2500 accounts
- 2501 - 5000 accounts

OPERATION

For optimum performance, use Alarm Monitoring and Command Center Modules in applications that receive 500 signals or less per day and a database that contains 10,000 signals or less.



800-641-4282

www.dmp.com

Made in the USA

INTRUSION • FIRE • ACCESS • NETWORKS

2500 North Partnership Boulevard

Springfield, Missouri 65803-8877

