

Product Overview

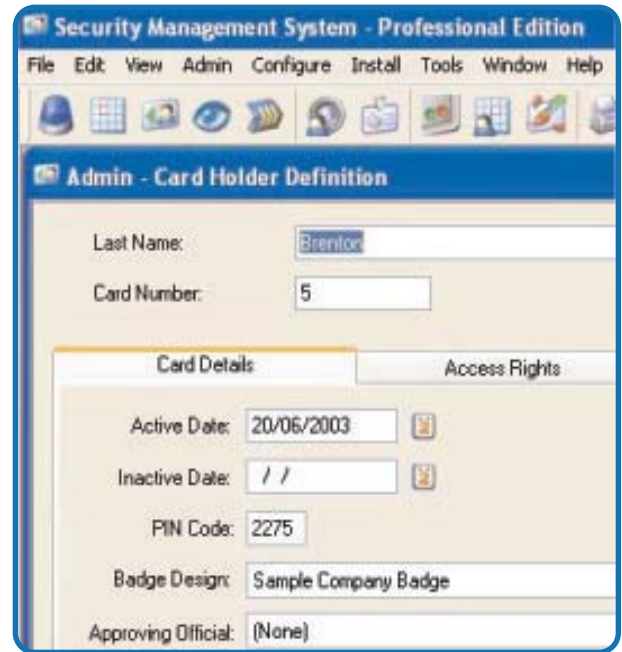
Symmetry Professional of the Security Management Software is designed to provide powerful integrated access control and security management solutions for most business applications.

Symmetry Professional is for medium-sized organizations requiring a client/server security management system that can use existing LAN/WAN networks.

Symmetry Professional includes database partitioning, which allows multiple companies to share the same system, and provides a cost-effective solution for buildings occupied by more than one organization.

Symmetry Professional provides a comprehensive range of standard features, including alarm monitoring and routing, visitor management, badging and map interfaces, with additional options available for specialist requirements. Client access is also available using a Web browser using the optional Web Access module.

A wide variety of readers is supported smart card, CAC, biometric, proximity and magnetic stripe. In addition, Symmetry Professional employs an open system architecture, giving the ability to import data from other databases.



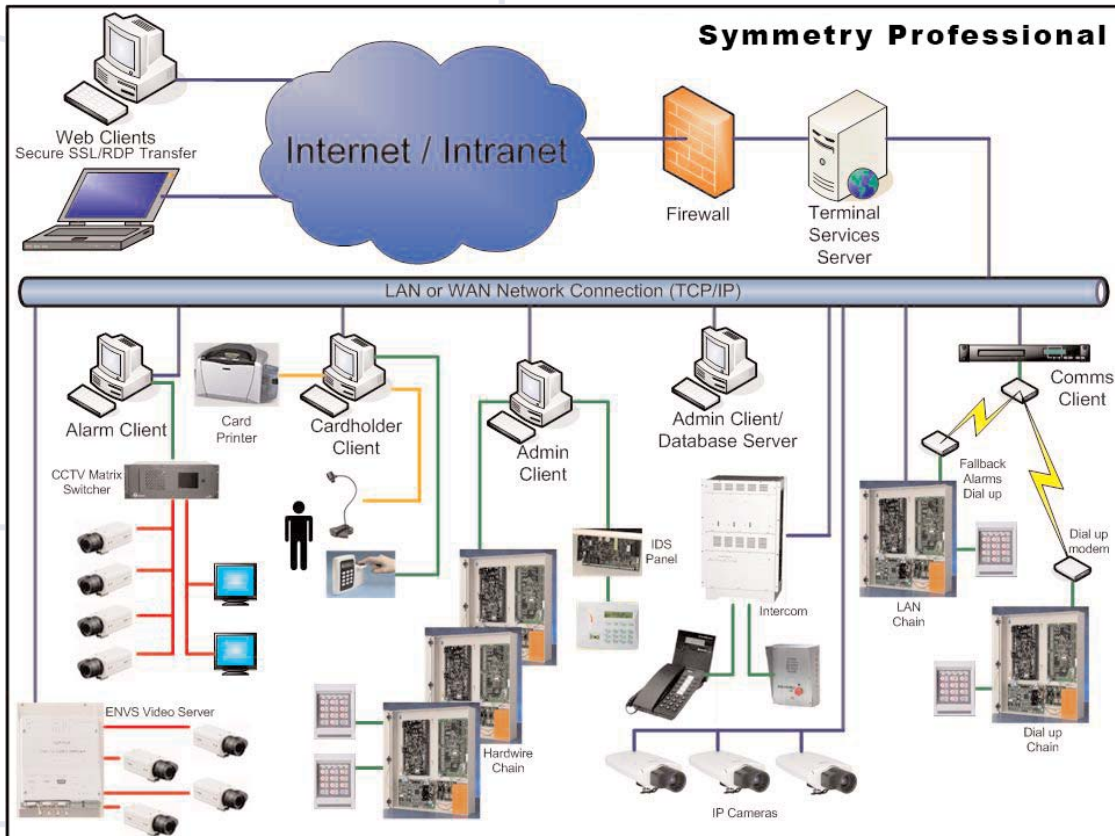
Key Features

- Video Badging and Visitor Management software as standard
- Competitively priced powerful Access Control and Security Management Solution for most business applications
- The power you need to control all your security needs
- Up to 512 readers and nine clients
- Unrestricted card holder capacity
- Employs the very latest thinking in user interface design
- Supplied with Microsoft® SQL Server Database Engine (MSDE)
- Compatible with mobile tablet PCs communicating over a wireless network
- Comprehensive alarm-handling features
- Provides options to control CCTV systems, digital video recorders, intercom systems and alarm panels
- Open architecture with various integration options

Optional Management Software

Software packages offer a range of fully-integrated additional features designed to enhance the system and provide higher levels of flexibility and integration. Optional features include:

- Symmetry Video Management
 - Threat Level Manager (TLM®)
 - Intrusion Interface Module
 - Web Access
 - XML Developer's Kit
 - Building Control Module
 - Intercom Management
- Directory Sync Manager
 - Guard Patrol Management
 - Muster Management (Safety Roll Call)
 - Smart Card Management
 - Data Connect Import/Export



AMAG Technology Inc. is a subsidiary of Group 4 Technology Ltd.
©COPYRIGHT AMAG TECHNOLOGY INC. 2006

AMAG is a Microsoft Gold Certified Partner for Security Solutions. Symmetry is a registered trademark of Group 4 Technology Ltd. ENVS is a trademark of Group 4 Technology Ltd. TLM is a registered trademark of Group 4 Technology Ltd. Microsoft is a registered trademark of Microsoft Corporation. All other brand names and product names are trademarks or registered trademarks of their respective owners.

Information contained in this literature is representative only and does not form part of a contract. Our policy is one of continuous product improvement and details may vary without notification. We are committed to providing defect-free products and services to our customers in partnership with equally committed suppliers and authorized dealers.

Microsoft
GOLD CERTIFIED
Partner

CE ISO 9001:2000 Certified

9700-1014-06/06