

Graphical Map Interface

MONITOR, LOCATE AND CONTROL DEVICES FROM MAPS

The Graphical Map Interface enables devices such as readers, doors, CCTV cameras and sensors to be easily monitored, located and controlled from graphical maps or floor plans.

Maps show the current status of each device, including alarm conditions. Since it is easy to locate an alarm from a map, the appropriate personnel can be dispatched quickly, leading to improved site security and efficiency.

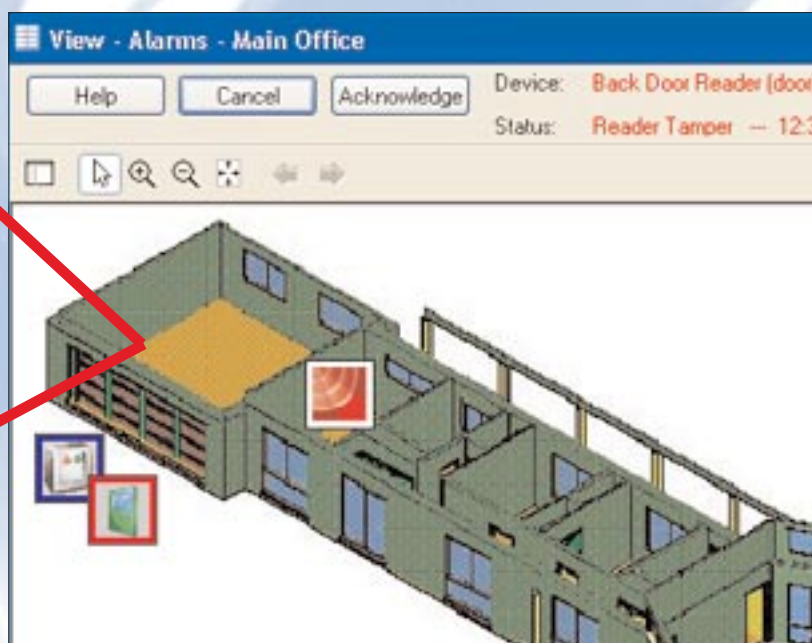
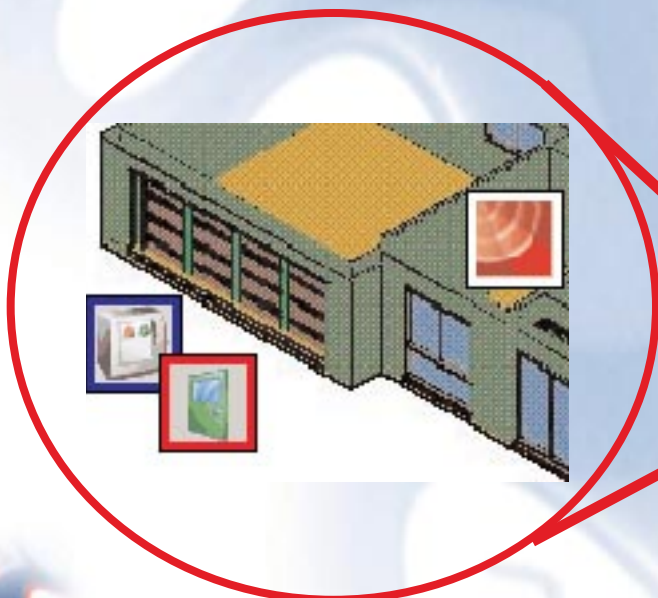
Maps can contain links to other maps, enabling an operator to locate an alarm or device with increasing accuracy. To make response times even quicker, a map can be set up to be displayed automatically when an alarm occurs.

Maps also allow an operator to control devices, such as to grant access through a selected door, or switch a CCTV camera to a specified monitor. The range of options is dependent on the device selected, which makes the system easy to use and understand.

Maps provide a highly-graphical interface for monitoring and controlling the security management system. The simplicity and intuitive interface enables personnel to obtain the benefits of using maps with minimal previous knowledge.

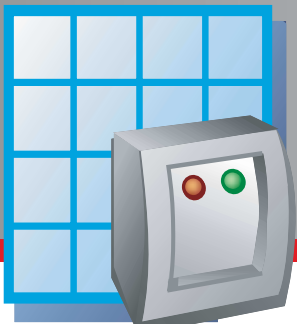
Key Features

- Provides a highly-visual interface to monitor and control the system
- Enables devices and alarms to be located quickly
- Improves site security and efficiency
- Easy to use – minimal training required
- Colored icons provide an instant visual indication of device status
- Custom icon support
- Automatic display of map on alarm for easy alarm acknowledgement
- Allows links between maps
- Commands can be sent to devices (e.g. to grant access through a door)
- Map Browser provides a tree view of the maps for easy navigation
- Suitable for use with tablet or touchscreen PCs for "roaming" supervision of site



AMAG

Access Control & Security Management Solutions



Graphical Map Interface

MONITOR, LOCATE AND CONTROL DEVICES FROM MAPS

General Specifications

● Map Installations

- Install/Maps screen enables map installation and naming
- Acceptable import file formats: Windows® Metafile (WMF/EMF) with a placeable header included, Windows bitmap (BMP), JPEG and AutoCAD® (DXF™)

● Map Configuration

- Configure/Maps screen enables installed maps to be configured
- Device icons can be dragged and dropped onto maps
- Icons for the following devices can be added to a map: readers, doors, monitor points, auxiliary outputs, reader groups, monitor point groups, auxiliary output groups, floor groups, CCTV cameras, CCTV ancillary devices, intercom call stations and DMP transactions
- Custom icon support (Windows bitmap format supported)
- Align options allow alignment of device icons
- Same Size Icons option enables icons to be resized consistently
- Links to other maps can be added
- Link right-click menu allows the link text, fill color, font, rotation and text alignment to be specified
- Zoom and Size to Fit options enable easy map viewing

● Map Display

- Configured maps can be displayed by users from the View menu or from the Alarms screen
- The system can be set up to display a map automatically when an alarm occurs
- Clicking a configured link on a map displays a different map
- Previous and Next buttons enable the sequence of maps displayed to be reviewed
- The Map Browser provides a tree view for easy selection of the map
- Zoom and Size to Fit options enable easy map viewing

● Device Status

- A colored border around each device icon indicates the current alarm status of the device
- Additional device status information is presented in a text format above the map
- The device status is updated automatically
- The system can be set up to display only those device icons belonging to the current company
- An Acknowledge button enables alarm acknowledgement

● Commands

- Right-clicking on a device icon enables commands to be sent to the device
- The content of the commands menu is dependent on the device type selected
- Typical commands are to grant access, set reader mode and switch an auxiliary output
- Commands for CCTV devices enable the camera image to be displayed on a selected monitor