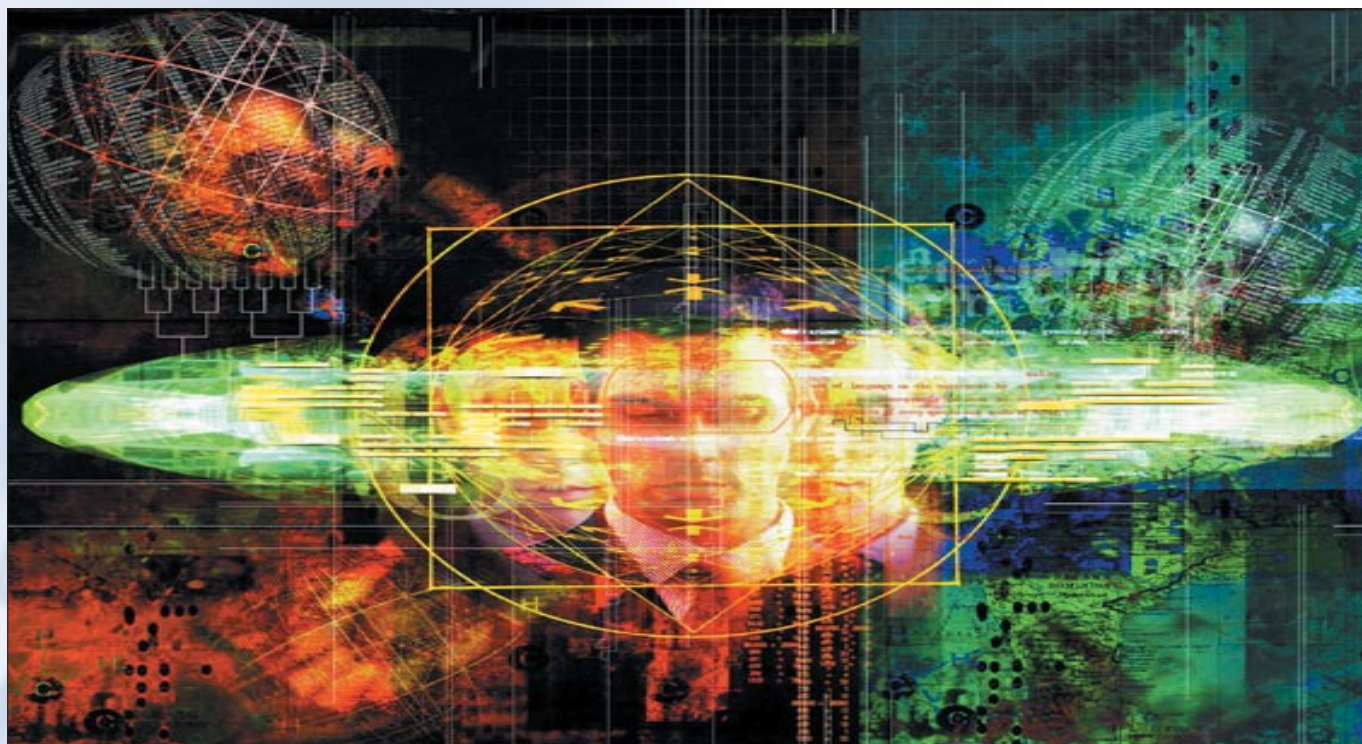




Biometric Integration

BEST OF BREED INTEGRATION



Biometrics are best defined as measurable physiological and / or behavioral characteristics that can be used to verify the identity of an individual.

These include fingerprint, retinal and iris scanning, hand geometry, facial recognition and other techniques.

The value proposition for Biometric readers in access control is simple: a card can be duplicated or stolen, but a unique physiological characteristic cannot. Biometrics enable access control systems to ask not only, "What do you have?" and "What do you know?" but, "Who are you?" As a result, biometrics are taking an increasingly prominent position as an additional access

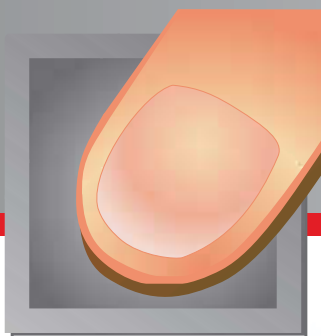
control solution in today's escalating requirements for physical security.

Our Access Control and Security Management systems are at the forefront of integrating these technologies as a seamless first line of defense. Supporting a variety of biometric technologies, our systems are pre-integrated to allow quick and easy deployment and management of iris, facial and fingerprint scanning as well as hand geometry options.

Utilizing Microsoft's® SQL Server database we give true scalable enterprise solutions capable of supporting high volumes of transactions and large numbers of connections.

AMAG

Access Control & Security Management Solutions



Biometric Integration

BEST OF BREED INTEGRATION

Our 3 Levels to Biometric Integration

● Level 1

Our multiNODE controllers allow the connection of any biometric reader type utilizing a Standard Wiegand Electrical Interface.

● Level 2

Our works with leading Biometric manufacturers to fully integrate their software applications into our user interface. This integration allows users to enroll, manage and monitor their biometric readers without leaving the Access Control system. We use a smart card to store the biometric template, thus simply solving template management and throughput issues. This eliminates the need for a separate template database and keeps the template in the possession of its owner, thereby satisfying privacy concerns. The smart card also speeds transaction times, since the template is compared only against the template on the card rather than a database of templates. Our software offers turn-key solutions for template management and biometric authentication and combines the power of enrolment and assignment of access throughout the system. Seamless Smart Card integration and programming allows for template placement onto contactless Philip's MIFARE® Smart Cards. This provides an Enterprise wide solution while combining the power and versatility of Smart Card technology.

Our own S813 Combined Smart Card and Fingerprint Reader combines the Bioscrypt® MV1200™ fingerprint sensor with a Philips MIFARE® / MIFARE® DESFire contactless Smart Card chip to produce a high security front end to an Access Control System.



● Level 3

The multiNODE-2000 and multiNODE-2100 controllers offer unparalleled hardware integration with selected biometric reader types such as hand geometry. Each M-2000 or M-2100 panel is capable of storing and authenticating up to 150,000 Hand Geometry templates locally. This fully integrated biometric solution eliminates the need for template management systems that require additional training, data entry, wiring, installation, and service and has created a "pure" biometric access control system that does not require traditional access control cards.